

NEWINGTON
LONDON

1 Bedrooms

Apartment

Located in London

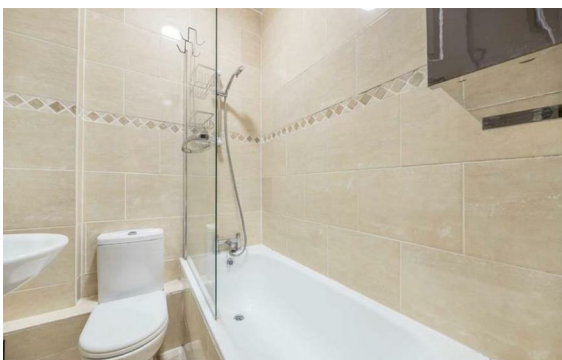
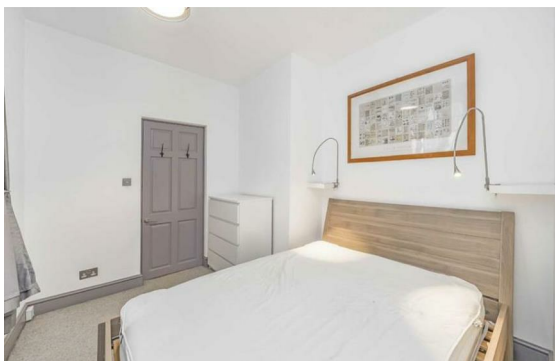
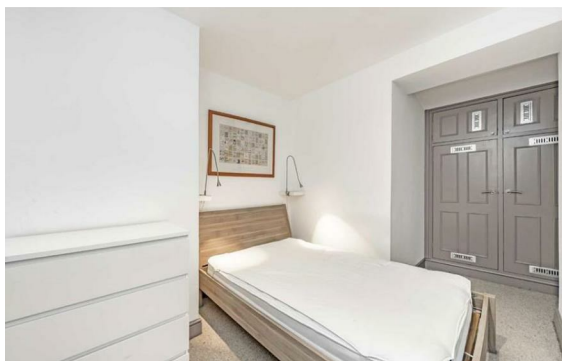
£675 Per Month



info@newingtonstates.com

<http://www.newingtonstates.com>

020 7724 2233



Lower ground floor. Set within a sought-after residential development with concierge services, this impressive one-bedroom apartment offers well-proportioned living space in a prime location. The property is ideally positioned moments from Regent's Park and close to a wide selection of local amenities.

The apartment comprises a spacious reception room, fully fitted kitchen, double bedroom, modern bathroom, and two private terraces. Conveniently located near Regent's College and London Business School, the property is particularly well suited to students.

EPC rating: C

Energy Efficiency Rating: C

Agents Note: Whilst every care has been taken to prepare these particulars, they are for guidance purposes only. All measurements are approximate and are for general guidance purposes only and whilst every care has been taken to ensure their accuracy, they should not be relied upon and potential buyers/tenants are advised to recheck the measurements.

NEWINGTON LONDON

60 Upper Montagu Street

London

W1H 1SN

020 7724 2233

info@newingtonstates.com

<http://www.newingtonstates.com>